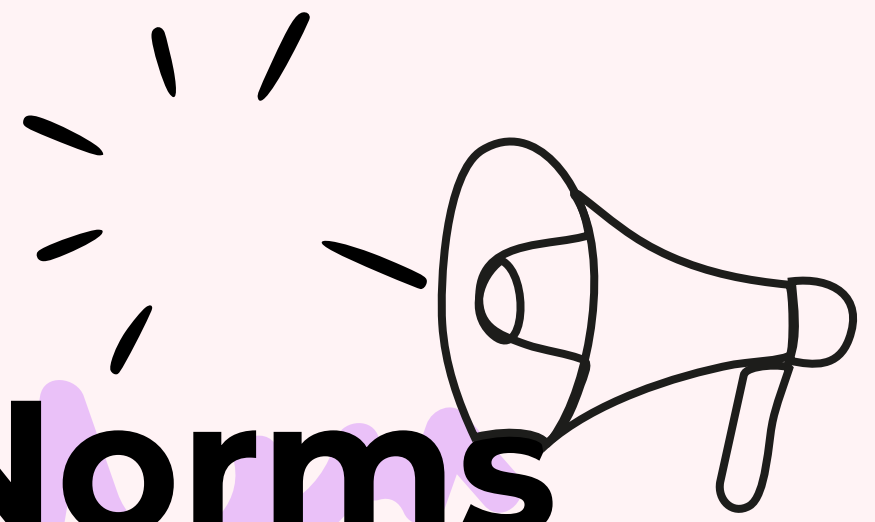
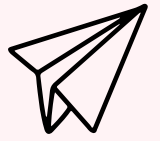


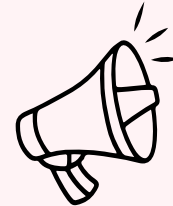
Beyond Neurotypical Norms



Towards Intersectional Inclusion for Neurodivergent, Queer, Disabled and Marginalised Communities at LCC.



Call for Participation



You are invited to take part in a student-only Workshop - a safer, peer-led space centering marginalised students and allies including neurodivergent, neurotypical, disabled, queer, black, brown, and other underrepresented communities committed to fostering and shaping inclusion at LCC.

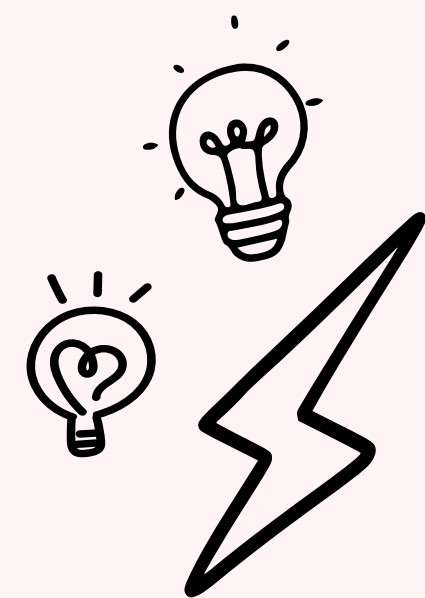
Together we'll co-create knowledge, share lived experiences, challenge institutional injustice and explore barriers and enablers to inclusion at LCC. All BA and MA students welcome. We aim to create a safe, respectful environment where students voice matters.

 18 February 2026

 LCC Room T805

 Time: 14:30-16:15 (breaks included)

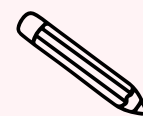
 £5 canteen or Typo cafe voucher for participants



What to expect

Workshop session featuring:

- Open discussion & creative participatory methods like: drawing, mapping, storyboarding and note taking
- All workshop outcome will be anonymised
- Bring what makes you feel comfortable to participate
- Coffee, tea, and biscuits provided



Potential Topics of Discussion:

- Challenges and opportunities experienced at LCC
- The role of technology in academia
- Policies impacting neurodiversity, gender inclusion, and disability justice

Scan to Join

For more information or to discuss access needs, please scan the QR code or contact the investigator Dr Antonella Nonnis a.nonnis@lcc.arts.ac.uk

This project is Funded by EDI Small Grant.

Part of PgCert Academic Practice in Art, Design and Communication at UAL