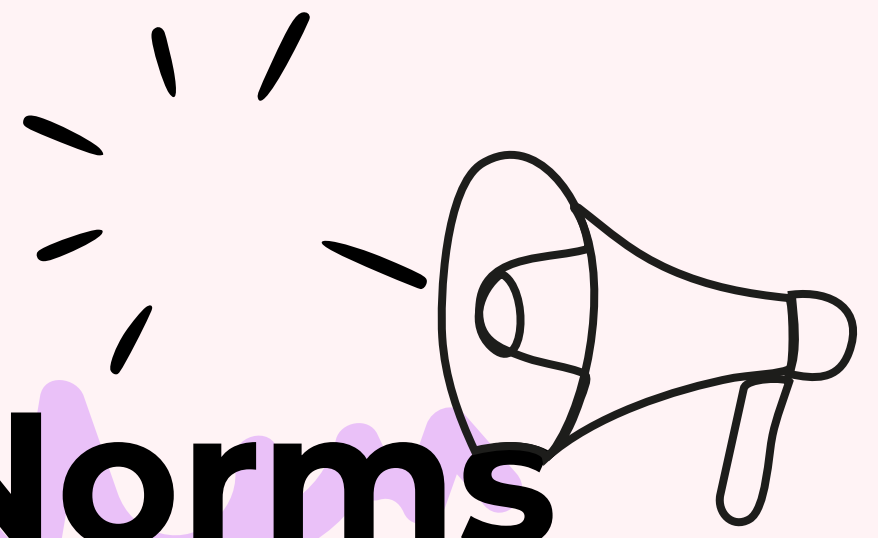
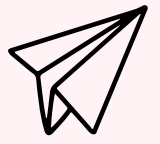


# Beyond Neurotypical Norms



A Student-Led Special Interest Group (SIG) Towards Intersectional Inclusion for Neurodivergent, Queer, and Disabled Communities at LCC.



## Call for Participation



You are invited to take part in a student-only Special Interest Group (SIG) - a safer, peer-led space centering neurodivergent, disabled, queer, Black, Brown, and other marginalised students and allies committed to fostering and shaping inclusion at LCC.

Together we'll co-create knowledge, shared lived experiences, challenge institutional injustice and explore barriers and enablers to inclusion at LCC.

This participatory session welcomes BA and MA Design School students to drive institutional change and enhance inclusivity at LCC.

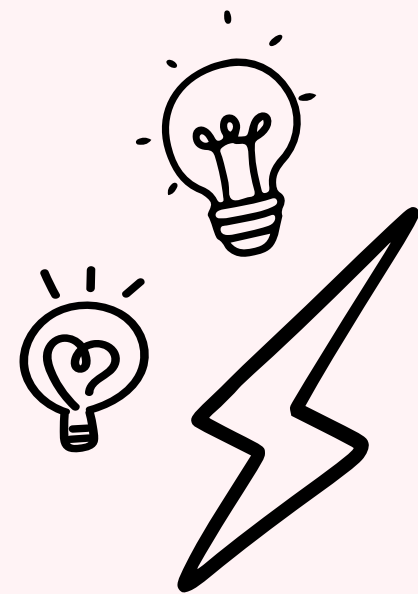
We aim to create a safe, respectful environment where students voice matters.

📅 03 December 2025

📍 LCC Room tbc

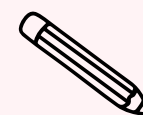
🕒 Time tbc

🧁 £5 canteen or Typo cafe voucher for participants



## What to expect

- Open Discussion (90-120 mins)
- Visual and participatory methods: drawing, mapping, soryboarding, note taking (all anonymised)
- Bring what makes you feel comfortable to participate
- Coffee, tea, and biscuits provided



## Potential Topics of Discussion:

- Challenges and opportunities experienced at LCC
- The role of technology in academia
- Policies impacting neurodiversity, gender inclusion, and disability justice



Scan to Join

For more information or to discuss access needs, please scan the QR code or contact the investigator Dr Antonella Nonnis [a.nonnis@lcc.arts.ac.uk](mailto:a.nonnis@lcc.arts.ac.uk)

Part of PgCert Academic Practice in Art, Design and Communication at UAL.